

COUNCIL TAX 2020



SURREY
COUNTY COUNCIL



This year we are setting a forward-thinking budget, investing in Surrey now and for the future.

We have worked tirelessly over the past couple of years to get a grip of Surrey's finances and we are now looking to the future with renewed optimism and energy. We will continue to work to make sure our services are the **very best they can be**, to keep improving the quality of life and opportunity for every single resident of Surrey. As part of our huge investment in Surrey, we are **raising core Council Tax by 1.99%** this year. This will help us invest hundreds of millions of pounds over the next five years to **make Surrey an even better place**.

A County that is fit for the future, ambitious, innovative, and a place where **people and businesses can thrive**.

● **Tim Oliver, Leader of Surrey County Council**

SURREY'S FIVE-YEAR INVESTMENT PLAN. We are making Surrey a place fit for the future. This includes investment in...

HIGHWAYS

We are increasing our investment in our 3,000 miles of road and pavements, spending **£92m** on improving and maintaining Surrey's highway network



GREENER FUTURES

We are developing proposals to invest around **£84m** in projects to protect the environment and help tackle the Climate Emergency, including a Solar Farm, Ultra Low Emission vehicles and electrification of transport services including buses and school transport.



EXTRA CARE

We are investing **£7m** in the first phase of a programme to deliver 725 specially adapted homes for elderly residents, to increase independence and reduce hospital admittance.



SPECIAL EDUCATIONAL NEEDS & DISABILITIES

We are investing **£31m** to provide 883 additional places for children with Special Educational Needs and Disabilities, including a new SEND school in Woking.



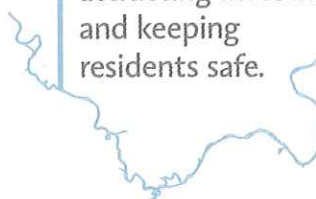
COMMUNITY INVESTMENT FUND

We are providing a **£100m** fund to regenerate high streets and invest in local communities, working with residents, businesses and partners like the Districts and Boroughs.



SURREY FLOOD ALLEVIATION SCHEME

We are investing **£270m** to protect over 30,000 homes and businesses from the risk of flooding – enhancing the environment, attracting investment and keeping residents safe.



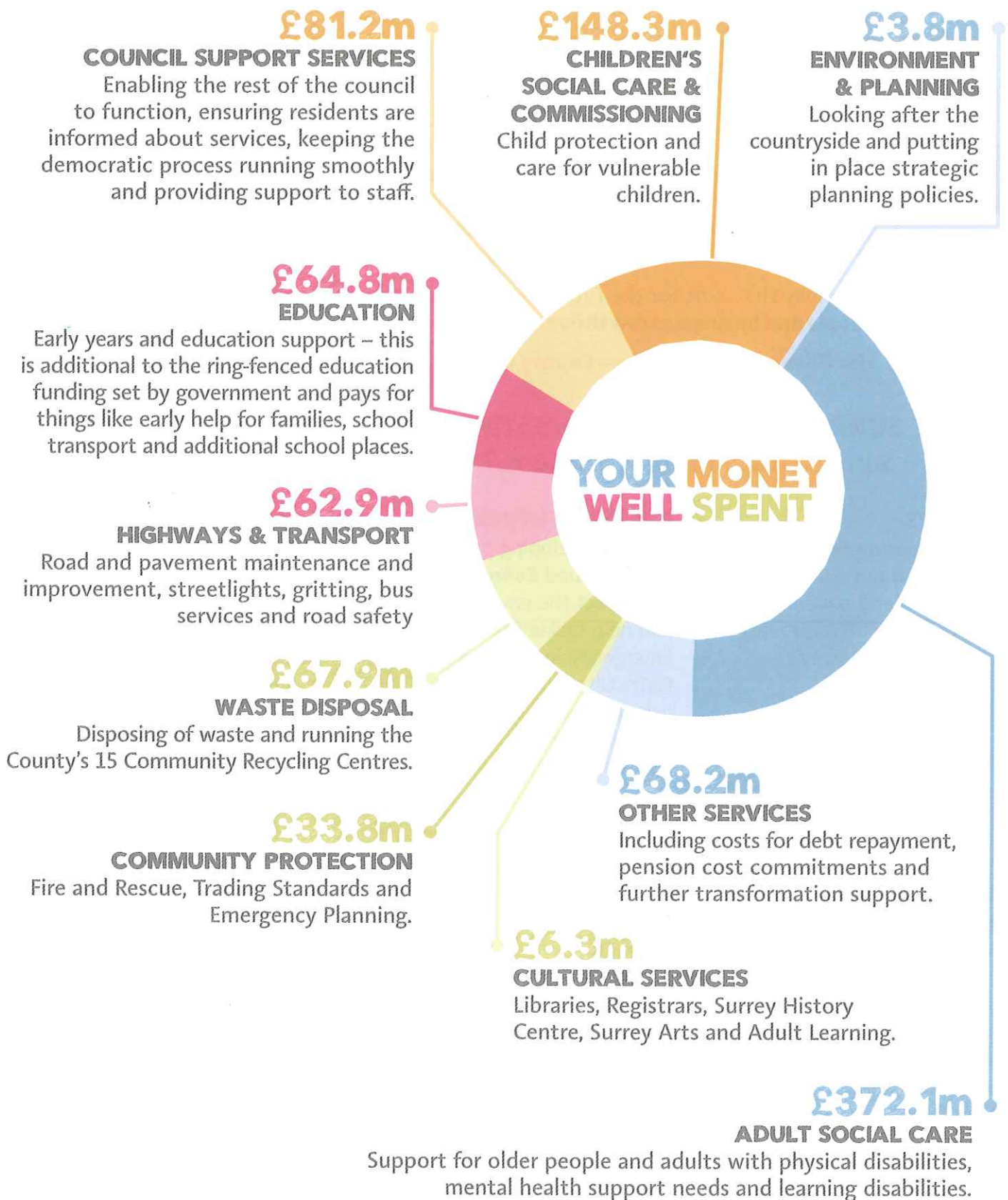
SCHOOLS

We are investing a further **£71m** to provide additional school places and improve school facilities across the County



For more information and detail on Surrey County Council's 2020/21 budget, visit www.surreycc.gov.uk/yourmoney

SURREY'S 2020/21 BUDGET. In addition to our investment plan, we're delivering the vital services this county relies on. This year, your council tax will be used for nearly £1bn of day to day spending...



We spend around **£1m every single day on Adult Social Care** – looking after people who need us most. If you have a physical disability, learning difficulties or are struggling with getting old, Surrey County Council will be there for you.

For 2020/21 the Government is allowing an increase of up to **2% for the Adult Social Care precept**, which will be added to your bill, to help support our vulnerable adults and those in need of social care.